

**SPECIFICATIONS:**

- **FREQUENCY:** 0.5 GHz TO 18 GHz
- **INSERTION LOSS:** REFLECTIVE: 5.0db  
ABSORPTIVE: 5.5db
- **ISOLATION:** 0.5 GHz TO 2 GHz: 60db  
2 GHz TO 18 GHz: 70db
- **VSWR:** REFLECTIVE IN/OUT: 2.0:1  
ABSORPTIVE IN/OUT: 2.0:1  
ABSORPTIVE OUT/OFF: 2.0:1
- **SPEED:** RISE: 10ns TYPICAL, 15ns MAX.  
FALL: 10ns TYPICAL, 15ns MAX.  
DELAY ON: 75ns TYPICAL, 150ns MAX.  
DELAY OFF: 75ns TYPICAL, 150ns MAX.
- **POWER INPUT:** (CW)+20dBm (STANDARD), +10 dBm (HIGH SPEED)
- **SURVIVAL POWER:** 1 WATT CW, 10 WATTS PEAK 1 usec
- **CONTROL:** TTL LOGIC "0"-ON "1"-OFF
- **POWER SUPPLY:** +5V @ 600 mA MAX.  
-5V @ 150mA MAX.(RELECTIVE)  
200mA MAX.(ABSORPTIVE/NDN-REFLECTIVE)

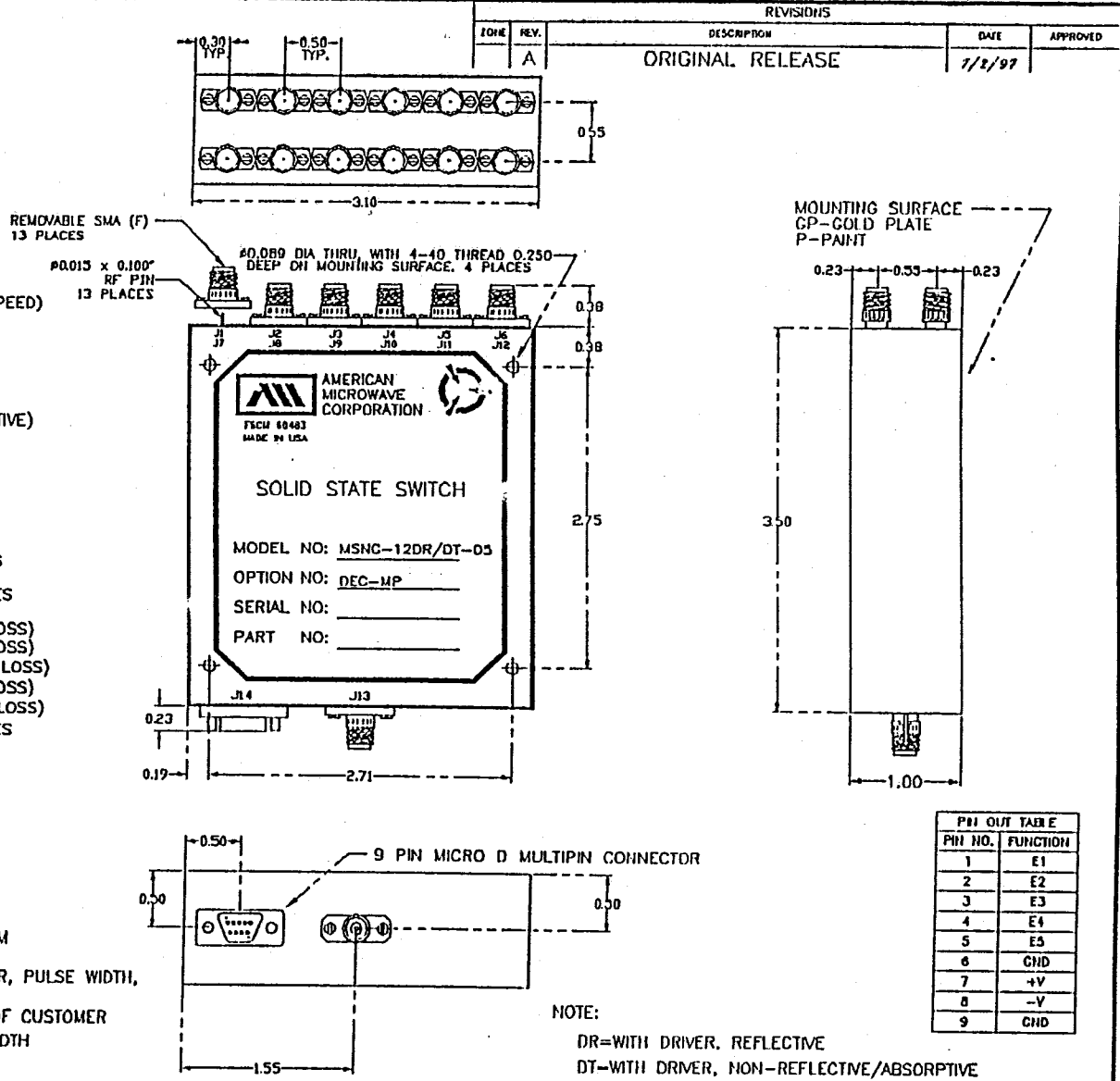
**OPTIONS:**

- INDEPENDENT CONTROL WITH SOLDER PIN STANDARD
- DEC-MP ..... 5 BIT DECODER WITH MULTIPIN
- DEC-SP ..... 5 BIT DECODER WITH SOLDER PIN
- MP-IND ..... INDEPENDENT CONTROL WITH MULTIPIN
- 10M18 ..... 10 MHz TO 18 GHz (INSERTION LOSS INCREASES BY 1.5db AT 10 MHz AND 0.5db AT 18 GHz)
- 100M18 ..... 100 MHz TO 18 GHz (INSERTION LOSS INCREASES BY 1.5db AT 100 MHz AND 0.5db AT 18 GHz)
- 118 ..... 1 GHz TO 18 GHz (NO CHANGE IN INSERTION LOSS)
- 218 ..... 2 GHz TO 18 GHz (NO CHANGE IN INSERTION LOSS)
- 412 ..... 4 GHz TO 12.4 GHz (NO CHANGE IN INSERTION LOSS)
- 818 ..... 6 GHz TO 18 GHz (NO CHANGE IN INSERTION LOSS)
- 1218 ..... 12 GHz TO 18 GHz (NO CHANGE IN INSERTION LOSS)
- 100M20 ..... 100 MHz TO 20 GHz (INSERTION LOSS INCREASES BY 1.5db AT 100 MHz AND 1.0db AT 20 GHz)
- 220 ..... 2 GHz TO 20 GHz (INSERTION LOSS INCREASES BY 1.0db AT 20 GHz)
- 1020 ..... 10 GHz TO 20 GHz (INSERTION LOSS INCREASES BY 1.0db AT 20 GHz)
- B01 ..... -12V POWER SUPPLIES
- B02 ..... -15V POWER SUPPLIES
- B03 ..... REVERSE LOGIC "1"=ON "0"=OFF
- B04 ..... DRIVERLESS, CURRENT CONTROLLED
- B05 ..... HIGH SPEED, TURNON/TURNOFF 25 nsec MAXIMUM WHEN APPLICABLE
- B06 ..... HIGH POWER - SPECIFY CW POWER, PEAK POWER, PULSE WIDTH, DUTY CYCLE, RF FREQUENCY AND BANDWIDTH
- B07 ..... CUSTOM DESIGNED PRODUCT- SPECIFY INITIALS OF CUSTOMER
- B08 ..... LOW VIDEO TRANSIENTS - SPECIFY VIDEO BANDWIDTH
- B09 ..... LOW INSERTION LOSS VERSION
- B10 ..... HIGHER ISOLATION VERSION

**ENVIRONMENTAL RATINGS:**

- **TEMPERATURE:** -55°C TO +85°C (OPERATING)  
-65°C TO +125°C (STORAGE)
- **HUMIDITY:** MIL-STD-202F, METHOD 103B COND. B
- **SHOCK:** MIL-STD-202F, METHOD 213B COND. B
- **VIBRATION:** MIL-STD-202F, METHOD 204D COND. B
- **ALTITUDE:** MIL-STD-202F, METHOD 105C COND. B
- **TEMPERATURE CYCLE:** MIL-STD-202F, METHOD 107D COND. A

NOTE: THE ABOVE SPECIFICATIONS ARE SUBJECT TO CHANGE OR REVISION



ZONE	REV.	DESCRIPTION	DATE	APPROVED
A		ORIGINAL RELEASE	1/2/97	

PIN NO.	FUNCTION
1	E1
2	E2
3	E3
4	E4
5	E5
6	GND
7	+V
8	-V
9	GND

NOTE:  
DR=WITH DRIVER, REFLECTIVE  
DT=WITH DRIVER, NON-REFLECTIVE/ABSORPTIVE

ALL DIMENSIONS ARE IN INCHES  
TOLERANCES:  
X.XX ±0.020  
X.XXX ±0.010

PART NO.		AMERICAN MICROWAVE CORPORATION FREDERICK, MARYLAND	
APPROVALS	DATE	TITLE OUTLINE DRAWING MSNC-12DR/DT-05-DEC-MP REFLECTIVE OR NON-REFLECTIVE/ABSORPTIVE SOLID STATE SWITCH	
DRAWN: <i>3/2/97</i> CHECKED: <i>P. J. Able</i> ISSUED: <i>8/26/97</i>	1/2/97	SIZE: A FSCM NO.: 60483 DWG NO.: 100-4162-3	REV. A SCALE: N/S SHEET: 1 of 1